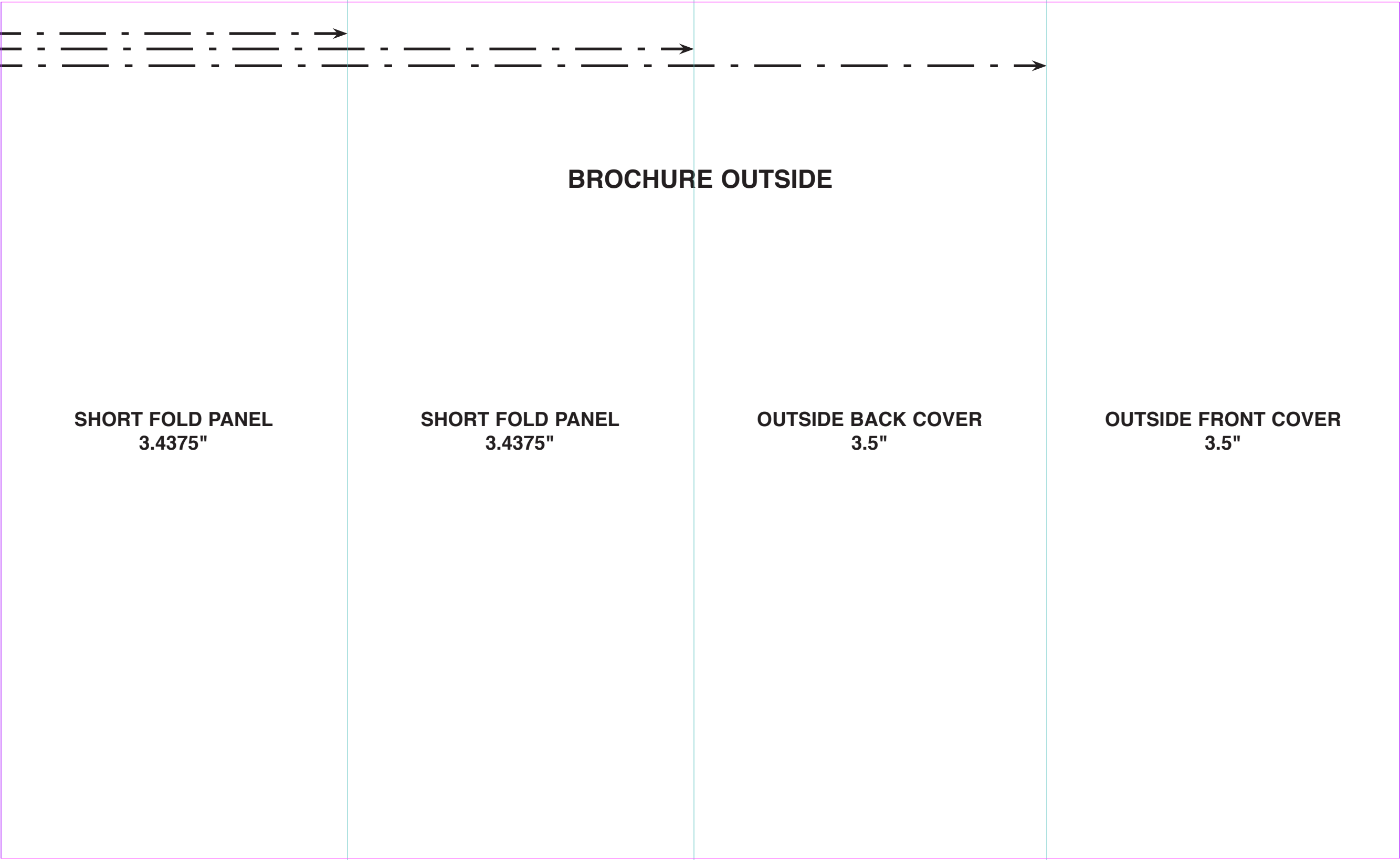


**CONTENT -
ALIGNMENT**

Use the inside vertical guides as a visual aid to simplify page content alignment within each panel.

This will help ensure any unintended page content does not extend outside the active panel during the folding process.



**BLEED
AREA**

Any page content that is intended to bleed outside the final trim area should extend into the bleed area at least .125" (1/8").

Use the perimeter guides as a visual aid for knowing how far your page content should be extended to satisfy production requirements.

