

**CONTENT-
ALIGNMENT**

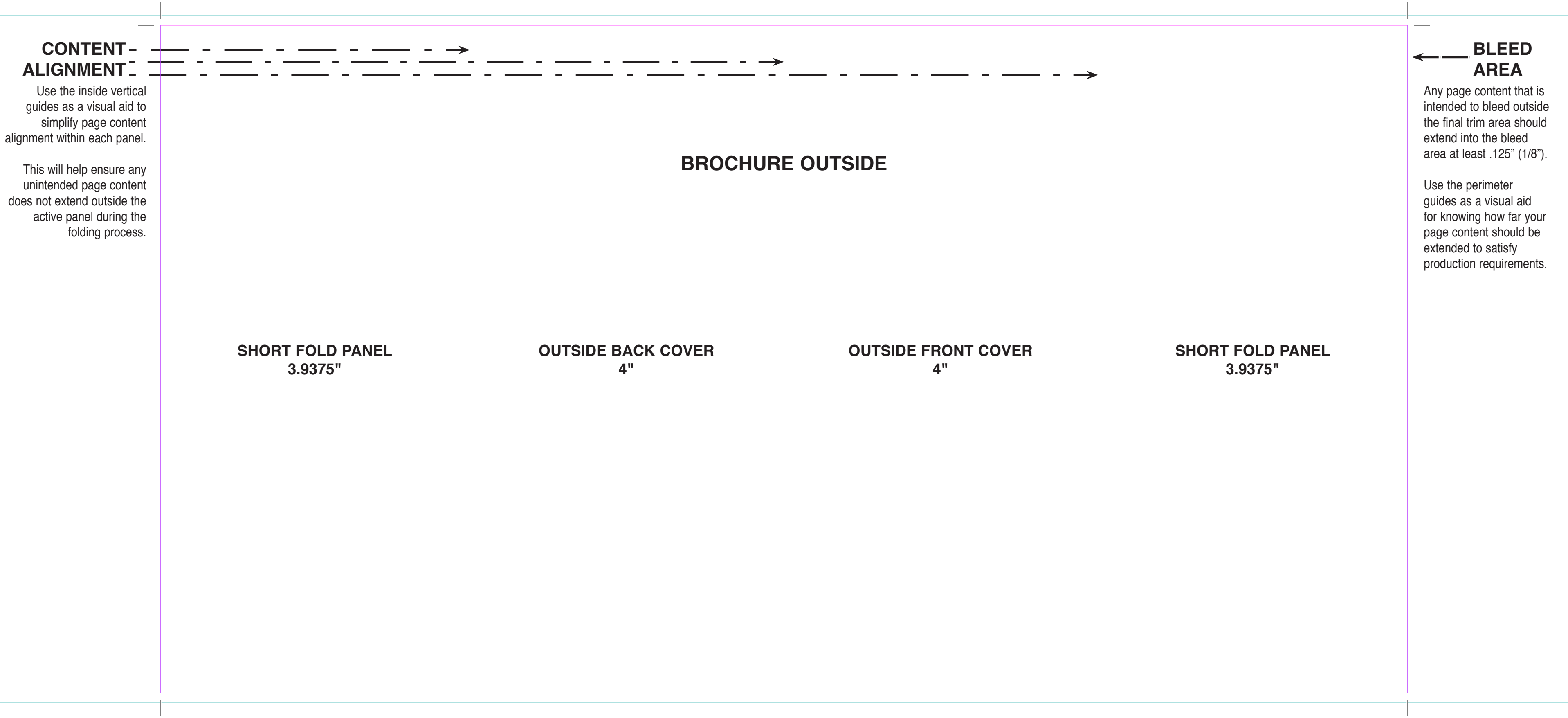
Use the inside vertical guides as a visual aid to simplify page content alignment within each panel.

This will help ensure any unintended page content does not extend outside the active panel during the folding process.

**BLEED
AREA**

Any page content that is intended to bleed outside the final trim area should extend into the bleed area at least .125" (1/8").

Use the perimeter guides as a visual aid for knowing how far your page content should be extended to satisfy production requirements.



**CONTENT-
ALIGNMENT**

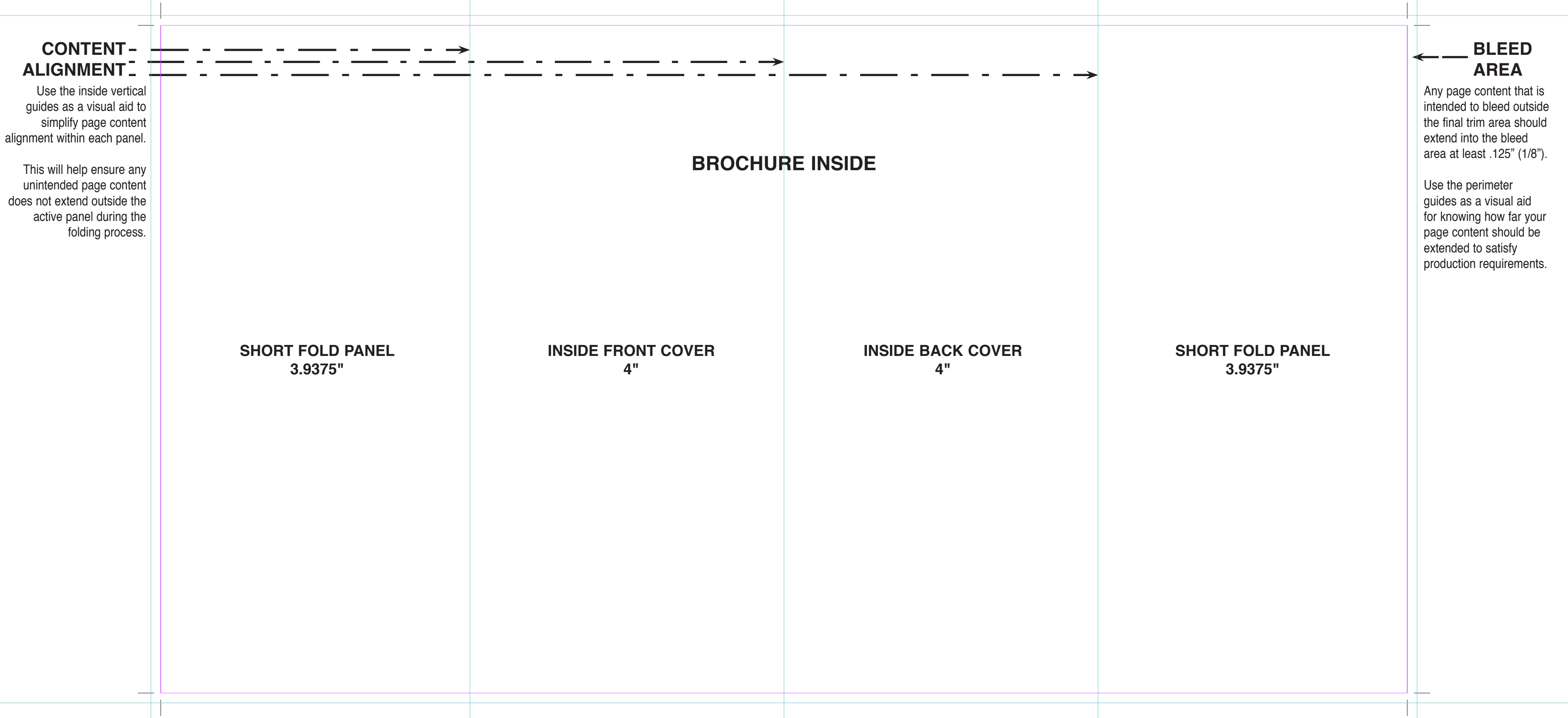
Use the inside vertical
guides as a visual aid to
simplify page content
alignment within each panel.

This will help ensure any
unintended page content
does not extend outside the
active panel during the
folding process.

**BLEED
AREA**

Any page content that is
intended to bleed outside
the final trim area should
extend into the bleed
area at least .125" (1/8").

Use the perimeter
guides as a visual aid
for knowing how far your
page content should be
extended to satisfy
production requirements.



BROCHURE INSIDE